



INTRODUCTION:

Thank you for purchasing our Patent Pending, Plug-in-Play Jeep Wrangler JK LED Tail Lights. Carefully remove all the components and examine for any missing parts or visible damage caused by shipping and report any damage to the carrier and keep the shipping package. Take a good look at all the components so you are familiar with them before digging into this.

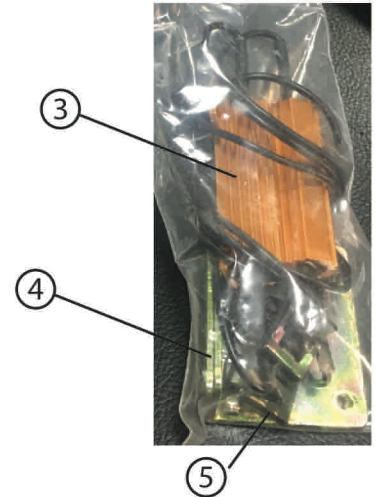
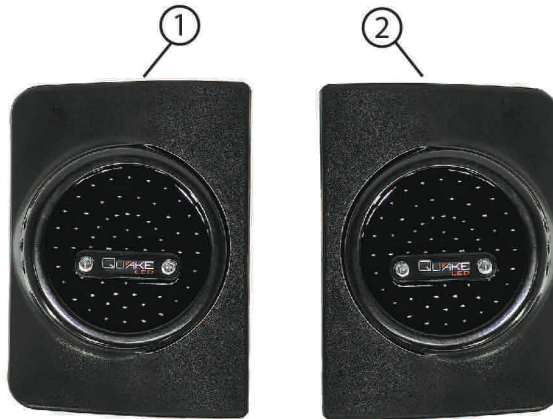


PARTS LIST:

1. DRIVERS SIDE TAIL LIGHT
2. PASSENGER SIDE TAIL LIGHT
3. PRE-WIRED RESISTORS (x2)
4. RESISTOR MOUNTING PLATES (x2)
5. MOUNTING PLATE SPEED CLIPS (x4)

REQUIRED TOOLS :

Phillips Head Screwdriver



Record any serial no. here _____

WARNING:

Read all instructions and warnings before installing and using.

INSTALLER: This manual must be delivered to the end user of this equipment.

INSTALLATION

Step 1. Use a Phillips screwdriver and remove the two screws that are closest to the tail gate. (Photo 1 & 2)

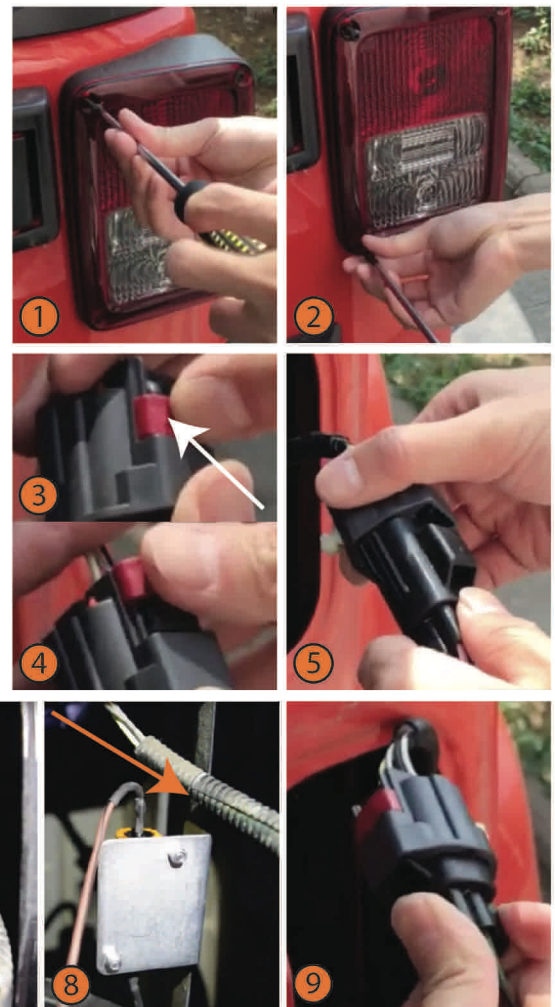
Step 2. Unplug the factory taillight connector by depressing the release tab and pulling the two connectors apart. (Photo 3, 4 & 5)

Step 3. Grab your new LED drivers side tail light and assemble the gold resistors to the resistor mounting plates. The resistor mounts to the larger side of the bracket via 2 holes. Tighten the bolts and nuts to hold the resistor to the plate. (Photo 6)

Step 4. Add two speed clips to this vertical part of this resistor mounting plate. (Photo 6) These metal clips will allow you to mount the finished resistor mounting plates to a vertical body rib on the inside of the vehicles taillight cavity. (Photo 7)

Step 5. Install the metal resistor plate onto the vertical body rib by pushing these 2 speed clips onto the rib. (Photo 8)

Step 6. Connect the LED taillight connector to the factory wire harness connector. (Photo 9)



— LIGHT UP THE DARKNESS —



2007-2017+ JEEP WRANGLER JK 6" X 8" 25W LED TAILLIGHTS

QTE1030

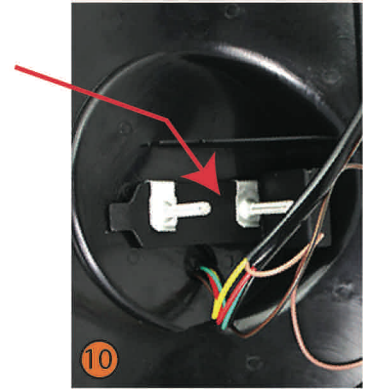


VER: 20-2

Step 7. Now it's time to install the new tail lights. These taillights are fastened to the Jeep by the 2 screws on the frontside that connect to a special fastening plate on the backside. This fastening plate is positioned against the taillight cavity outer lip and pulls the taillight tight to the body. Loosen the 2 screws so this plate is loose but do not totally remove the screws. (Photo 10 & 11)

Step 8. Position the taillight and special mounting bracket into position and tighten the screws. Position the taillight into it's final location as it gets closer to the body panel. Tighten the taillight until it is tight and snug against the body panel. Do not over tighten as you might warp some components and damage the body or taillight. (Photo 12)

Step 9. Enjoy....



Removed bracket for illustration purpose



FUNCTION

RUNNING LIGHT

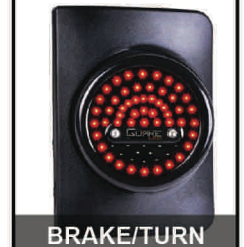
BRAKE LIGHT +
TURN SIGNAL

SIDE MARKER

REVERSE LIGHT



FUNCTION



CONNECTOR

+12V REVERSE

Green

+12V BRAKE/TURN

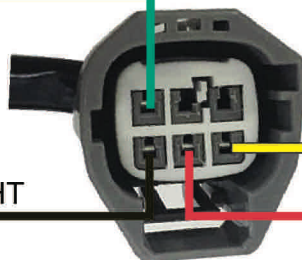
Yellow

- 12V TAIL LIGHT

Black

+12V RUNNING

Red



-Wire Diagram is for Illustration Only.

-Actual wire harness lengths and wire gauge are not to scale.

-Actual wire harness components and lights are not to scale.



LIGHT UP THE DARKNESS